



“Precision - Performance - Partnership”



COMPANY PROFILE

Abhimannu Engineering is a leading fabrication and engineering services company, delivering custom-built industrial structures, piping systems, and mechanical solutions.

☎ +91 97843 93154 | +91 77377 98730

✉ abhimannueng@gmail.com

📍 Office - 2nd Floor, Shreeji Sahaj Business Hub, 210, near Narmada College, Bharuch, Gujarat 392011

📍 Workshop - Plot No. - D II/E/296, Tah, Dahej-II, Industrial Estate, Vagra, Bharuch, Gujarat 392130



Our Website

ABOUT ABHIMANNU ENGINEERING

Founded in 2017, Abhimannu Engineering is a trusted name in the field of fabrication and engineering services, committed to delivering innovative, reliable, and quality-driven solutions to a wide range of industries. With a strong foundation built on integrity, precision, and performance, we specialize in custom-built industrial fabrication, piping systems, mechanical installations, and shutdown maintenance services.

Over the past decade, we have grown into a dynamic company equipped with modern infrastructure, a skilled workforce, and a passion for engineering excellence. Our work is rooted in deep technical expertise, advanced project management capabilities, and a client-focused approach that emphasizes long-term value creation.

At Abhimannu Engineering, we believe in continuous improvement and adapting to the evolving needs of our clients and the market. Our ISO-certified processes and adherence to industry best practices have helped us establish long-standing relationships with some of the most respected names in the industry.

We take pride not only in what we build but in how we build it — with responsibility, transparency, and a relentless commitment to excellence.

INDUSTRY WE SERVE



Chemical



Oil & Gas



Petrochemicals



Pharmaceuticals



Power & Energy



Food & Beverage

“Precision - Performance - Partnership”





“ **Engineering Excellence, Building Strong
Foundations for a Sustainable Future.** ”

Our Vision

To be a trusted and respected engineering company, recognized for delivering innovative, high-quality, and sustainable solutions—while building strong, long-term partnerships across industries.

Our Mission

To provide precise and reliable engineering, fabrication, and erection services through technical excellence, safety-first execution, and a commitment to customer satisfaction, integrity, and continuous improvement.

SERVICES WE PROVIDE

Abhimannu Engineering offers comprehensive engineering, fabrication, and erection services designed to support industrial projects from initial planning to final commissioning. Our experienced team ensures that each service is delivered with precision, safety, and efficiency.



Industrial Fabrication

We fabricate tanks, vessels, platforms, ducting, and components using durable materials and advanced techniques.



Piping Systems

We deliver stainless and carbon steel piping solutions with fabrication, installation, testing, and commissioning.



Equipment Erection & Commissioning

We provide equipment erection and commissioning ensuring correct installation, accurate alignment, and optimal operation.



Shutdown & Maintenance Services

We manage planned shutdowns and emergency maintenance efficiently, ensuring plant safety, smooth operations, and minimal downtime.



Blasting Work (MS/SS)

We provide blasting services for MS and SS surfaces, ensuring effective cleaning, durability, and superior coating adhesion.



Painting Work

We provide industrial painting services ensuring protection, durability, and long-lasting surface performance.

INFRASTRUCTURE & MACHINERY

At Abhimannu Engineering, our state-of-the-art infrastructure is the backbone of our fabrication and engineering capabilities. Designed to support high-precision work and large-scale production, our facility ensures timely and quality-driven project execution across industries.

WORKSHOP FACILITIES

Our fully equipped workshop is located near Dahej, a key industrial hub, and is built to handle diverse fabrication and assembly needs.

- 5000 sq. ft. dedicated fabrication area
- 5500 MT annual fabrication capacity
- Strategically located for easy logistical access

KEY EQUIPMENT

We invest in high-performance machinery to ensure accuracy, consistency, efficiency, long-term reliability, and superior quality in every project.



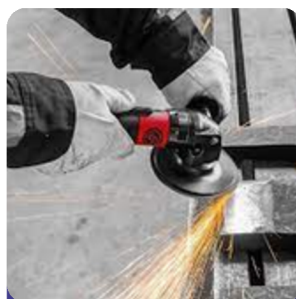
ROLLING MACHINE



WELDING MACHINES



EOT CRANES



PNEUMATIC TOOLS

QUALITY ASSURANCE

Abhimannu Engineering follows ISO-certified quality control with in-house and third-party inspections, ensuring reliable and efficient fabrication and engineering solutions. Our strong infrastructure guarantees consistency and excellence in every project.



Our advanced infrastructure is built to support both small-scale and large-scale industrial operations with precision and speed. We continually upgrade our equipment to meet evolving industry standards and client expectations.

AVAILABLE RESOURCES & EQUIPMENT

We are equipped with a wide range of modern machinery, tools, and support resources to efficiently execute projects of varying scale and complexity. Our inventory includes cranes, welding machines, cutting tools, lifting devices, and other essential equipment, all maintained to deliver reliable performance.

With strong infrastructure and well-maintained resources, we ensure precision, safety, and efficiency at every stage of work. This readiness allows us to meet client requirements on time while maintaining the highest standards of quality. Here is a list of our available equipment and resources:

NO.	DESCRIPTION	UOM	QUANTITY
1	Crane 100 MT	NOS.	01
2	Crane 80 MT	NOS.	01
3	Manlift	NOS.	05
4	Blasting Compressor	NOS.	10
5	Airless Compressor	NOS.	20
6	Farana	NOS.	10
7	Trailer	NOS.	04
8	Eicher	NOS.	05
9	Transformer W/M	NOS.	50
10	Pug Machine	NOS.	12
11	Gas Cutting	NOS.	100
12	Drill Machine	SET	20
13	All Cut Drill Machine	NOS.	20
14	Chain Block (10 TON)	NOS.	10
15	Chain Block (.05)	NOS.	30
16	Chain Block (.03)	NOS.	30
17	Chain Block (.02 TON)	NOS.	30

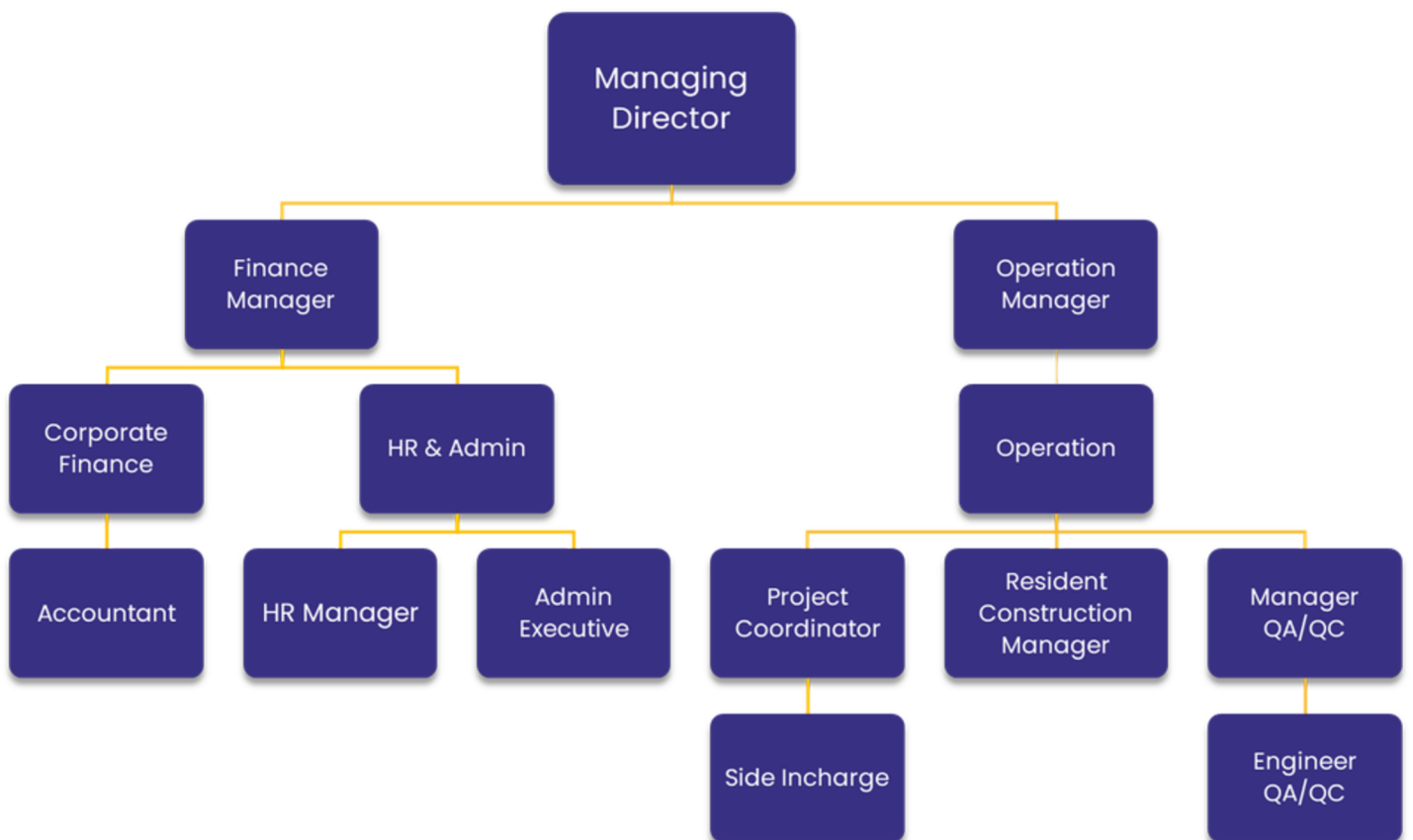
AVAILABLE RESOURCES & EQUIPMENT CONT...

NO.	DESCRIPTION	UOM	QUANTITY
18	Chain Block (.01 TON)	NOS.	30
19	AC-5	NOS.	60
20	AC-7	NOS.	40
21	Cut Off Machine	NOS.	20
22	Bench Machine	NOS.	4
23	Screw Jack (50 TON)	NOS.	20
24	D-Shackles (Up to 20 Ton)	NOS.	80
25	Hammer	NOS.	80
26	Spanner (6 to 32 D & R)	SET	400
27	Torque Wrench	NOS.	12
28	Portable Oven	NOS.	12
29	Mother Oven	NOS.	8
30	Tool Box	SET	40
31	Welder Tools	SET	50
32	Sling Wire (Up To 20 Mtr.)	NOS.	100
33	Lifting Bely (Up To 20 Mtr.)	NOS.	100
34	Lylon Rope	Mtr.	1000
35	Hydra (12 Mtr.)	NOS.	2
36	Single Pulley	NOS.	40
37	Double Pulley	NOS.	48
38	Cylinder Trolley	NOS.	80

MANPOWER AND STAFF DATA

At Abhimannu Engineering, our structured hierarchy ensures smooth operations, accountability, and quality delivery.

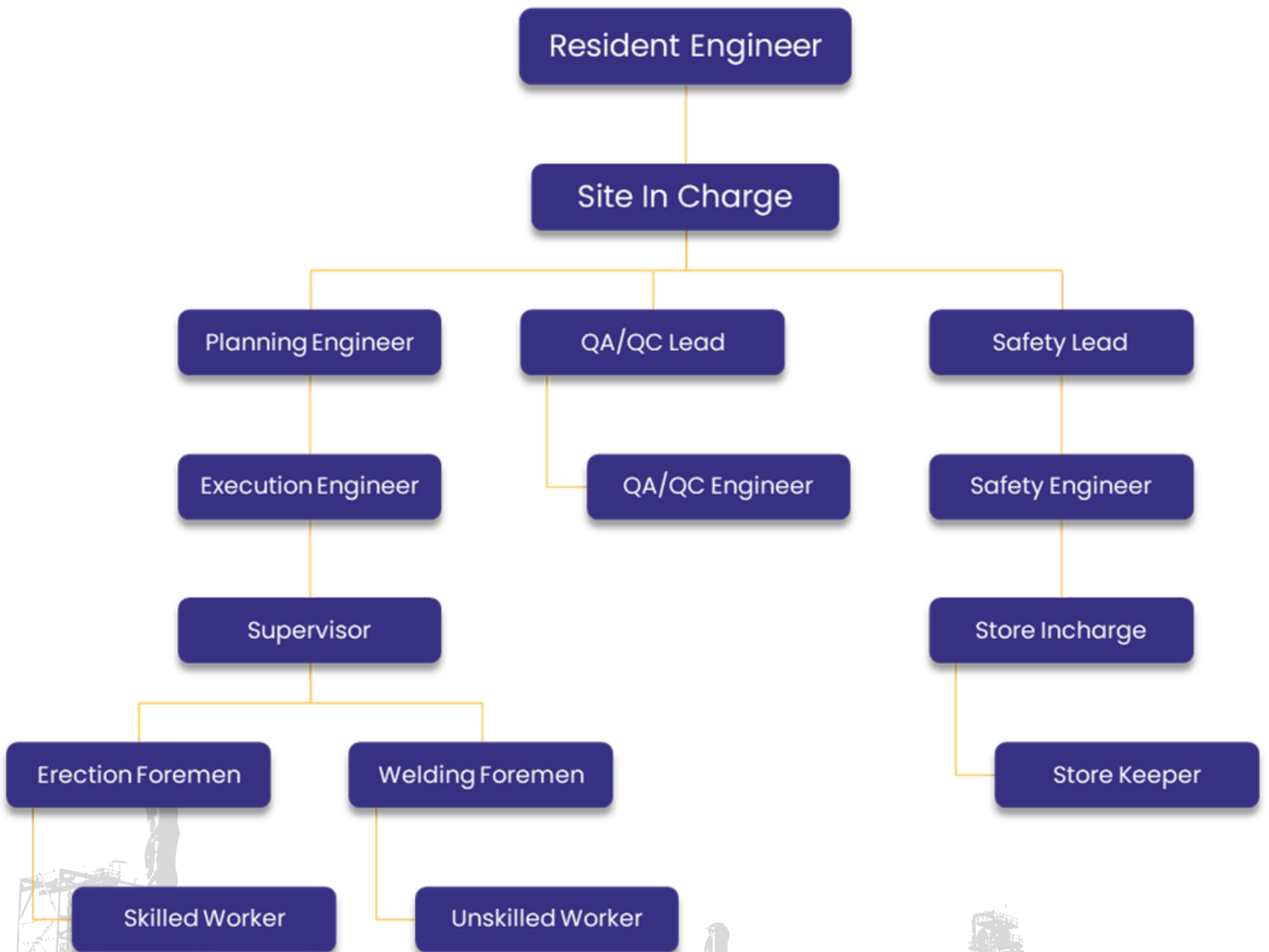
With strong leadership and specialized teams across finance, HR, operations, and QA/QC, we work seamlessly to achieve efficiency, innovation, and client satisfaction.



ORGANIZATIONAL SETUP FOR SITE EXECUTION PURPOSE

To ensure seamless project execution, Abhimannu Engineering follows a well-defined organizational structure at every site.

Our setup clearly outlines roles and responsibilities, enabling smooth coordination, strict quality control, and uncompromised safety throughout the project lifecycle.



PROJECT PORTFOLIO

At Abhimannu Engineering, we take pride in executing diverse and challenging projects across key industrial sectors. Our portfolio reflects our commitment to engineering excellence, timely delivery, and client satisfaction. From refinery equipment to cleanroom piping, each assignment is handled with precision, safety, and professionalism.

COMPLETED PROJECTS

Proven Expertise in Execution

A snapshot of successfully delivered projects reflecting our strength & client trust.



SRF LIMITED



NAVIN FLUORINE LTD



UNITOP CHEMICALS



GFL

Every project is executed with meticulous planning, technical precision, and an unwavering focus on client satisfaction—making us a trusted partner in engineering excellence.

CERTIFICATIONS & CLIENTS

We are committed to maintaining the highest standards of quality, environmental responsibility, and workplace safety. Our certifications reflect this dedication:

- ISO 9001:2015 – Quality Management System (QMS)
- ISO 14001:2015 – Environmental Management System (EMS)
- ISO 45001:2018 – Occupational Health & Safety Management System (OHSMS)

OUR COMPANY POLICIES

Quality Policy: Deliver reliable, defect-free solutions with a continuous improvement approach

Environmental Policy: Reduce environmental impact through waste reduction, energy efficiency, and sustainable resource use

OUR ACHIEVEMENT

We foster a zero-incident culture through training, audits, and safe practices. With God's grace and our unwavering safety-first approach, we are proud of no major incidents to date.

CLIENTS WE SERVE

We proudly serve a wide range of industries including oil & gas, petrochemicals, pharmaceuticals, infrastructure, logistics, and food & beverage.






“Precision - Performance - Partnership”

Abhimannu Engineering is a leading fabrication and engineering services company, delivering custom-built industrial structures, piping systems, and mechanical solutions.

CONTACT US

 +91 97843 93154 | +91 77377 98730

 abhimannueng@gmail.com

 2nd Floor, Shreeji Sahaj Business Hub, 210, near Narmada College,
Bharuch, Gujarat 392011



Our Website